

**DIGITAL  
IP PA  
SYSTEM**



**聖公會聖約翰曾肇添小學**  
S.K.H. St. John's Tsang Shiu Tim Primary School

**SKH St. John's Tsang Shiu Tim Primary School**

11 On Chui Street, Kwun Tong, Kowloon

© Sunrise Trading Company

OUTDOOR  
PLAYGROUND

G/F

Music Horn Loudspeaker  
**MUH-6300**

Music Horn Loudspeaker  
**MUH-6300**

# PLAYGROUND

Music Horn Loudspeaker 5 pc

G/F

Music Horn Loudspeaker  
**MUH-6300**

Music Horn Loudspeaker  
**MUH-6300**

**PLAYGROUND**

Music Horn Loudspeaker 5 pc

G/F

SKH St. John's Tsang Shiu Tim Primary School

Music Horn Loudspeaker  
**MUH-6300**

CARPARK



Music Horn Loudspeaker

5 pc

G/F

# MUH-6300

Music Horn  
Loudspeaker



- ✓ 100 Hours Life Tested
- ✓ CE Certified(EMC & LVD)
- ✓ IP Rated
- ✓ Rustproof
- ✓ EASE Data
- ✓ RoHS Compliance
- ✓ UV Protected
- ✓ Withstanding/Insulation Tested



**Water-proof**



**Dust-proof**



**UV Protected**



**Vandal  
Resistance**



INDOOR  
PLAYGROUND +

# INDOOR PLAYGROUND

Column Speaker 6 pc

Column Loudspeaker  
**COS-6300**

Column Loudspeaker  
**COS-6300**

Column Loudspeaker  
**COS-6300**



Column Loudspeaker  
**COS-6300**

Column Loudspeaker  
**COS-6300**

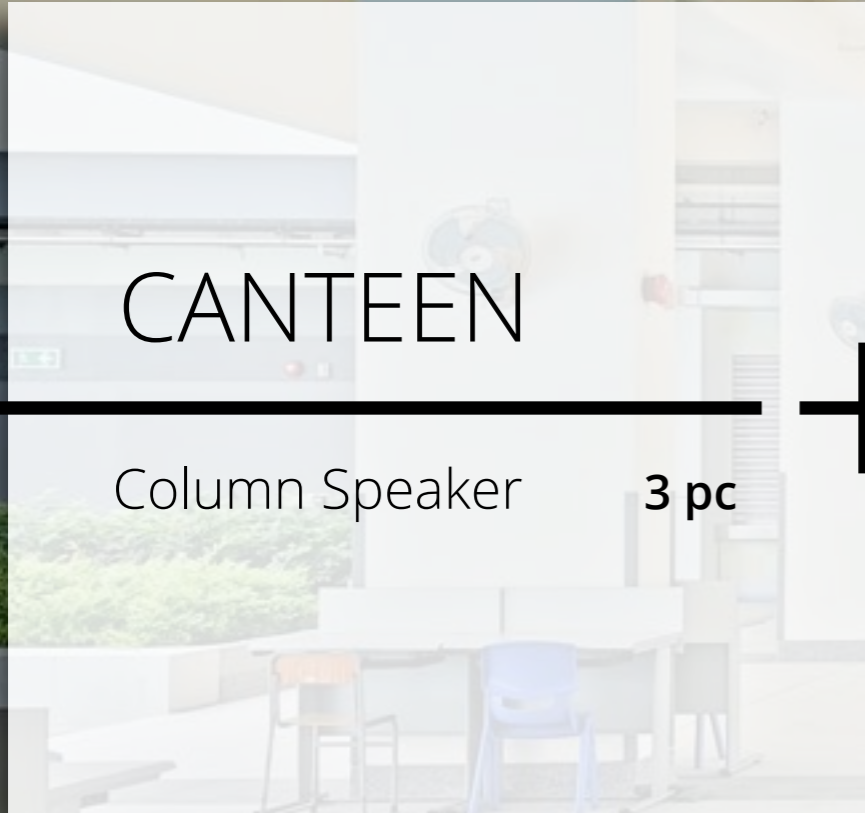
Column Loudspeaker  
**COS-6300**

# INDOOR PLAYGROUND

Column Speaker      6 pc

CANTEEN

Column Speaker 3 pc



Column Loudspeaker  
**COS-6300**

Column Loudspeaker  
**COS-6300**



# COS-3300

Column Loudspeaker



- 100 Hours Life Tested
- CE Certified(EMC & LVD)
- IP Rated
- Rustproof
- EASE Data
- RoHS Compliance
- UV Protected
- Withstanding/Insulation Tested

**G/F | Indoor Playground**



**Water-proof**



**Dust-proof**



**UV Protected**



**Vandal  
Resistance**



# GENERAL OFFICE

**AD-214**

UHF Antenna Divider

1 pcs

**UXD-200**

Wireless Mic. System

2 pcs

**WMP-1206**

Speaker Circuit Zone Selector

1 pcs

**QSM-624AZ**

PA Amplifier

2 pcs

**G/F**





# WMP-1206

Speaker Circuit Zone Selector

- This is a selector for small zone broadcast which can be applied to 12 separated broadcast areas and it's equipped with 1 programmeable group button and 1 all-call button.
- Built-in RS485, RS232 and USB ports facilitates integrating with other control system. BXB also announced a powerful graphical control interface, equipping with analog input and out put trigger which can be used for analog scheuled clock and ampli-fer remote activate.

# CLASSROOMS +

Wall-Mount Cabinet Speaker 42 pc

IP Decoder 39 pc

Pre-amp 39 pc

Intercom Microphone 38 pc

Cabinet Speaker  
**Q-535P**

# CLASSROOM

Wall-Mount Cabinet Speaker 1 pc



Cabinet Speaker  
**Q-535P**

Cabinet Speaker  
**Q-535P**

# COMPUTER ROOM

Wall-Mount Cabinet Speaker 2 pc





# Q-535P

Wall-mount Cabinet Speaker



**G/F ~ 4/F**



Intercom Microphone  
**ICP-3121**

# COMPUTER ROOM



Intercom Microphone

1 pc



# ICP-3121

Intercom Microphone



- Connect with IP Decoder for talking to the administrator of the control room.
- Equipped with OLED monitor for displaying the microphone status.
- Equipped with a backlit button for sound amplification. As the user presses the button, the loudspeakers that connect with the IP Decoder would be activated for teaching.

**1/F ~ 4/F**



Cabinet Speaker  
**Q-535P**

Cabinet Speaker  
**Q-535P**

# LIBRARY

Cabinet Speaker	4 pc
IP Decoder	2 pc
Pre-amp	2 pc
Intercom Mic.	1 pc

下第一件事是讀

# LIBRARY

- Cabinet Speaker 4 pc
- IP Decoder 2 pc
- Pre-amp 2 pc
- Intercom Mic. 1 pc

Cabinet Speaker  
**Q-535P**

Cabinet Speaker  
**Q-535P**

IP Decoder  
**ICP-5111**



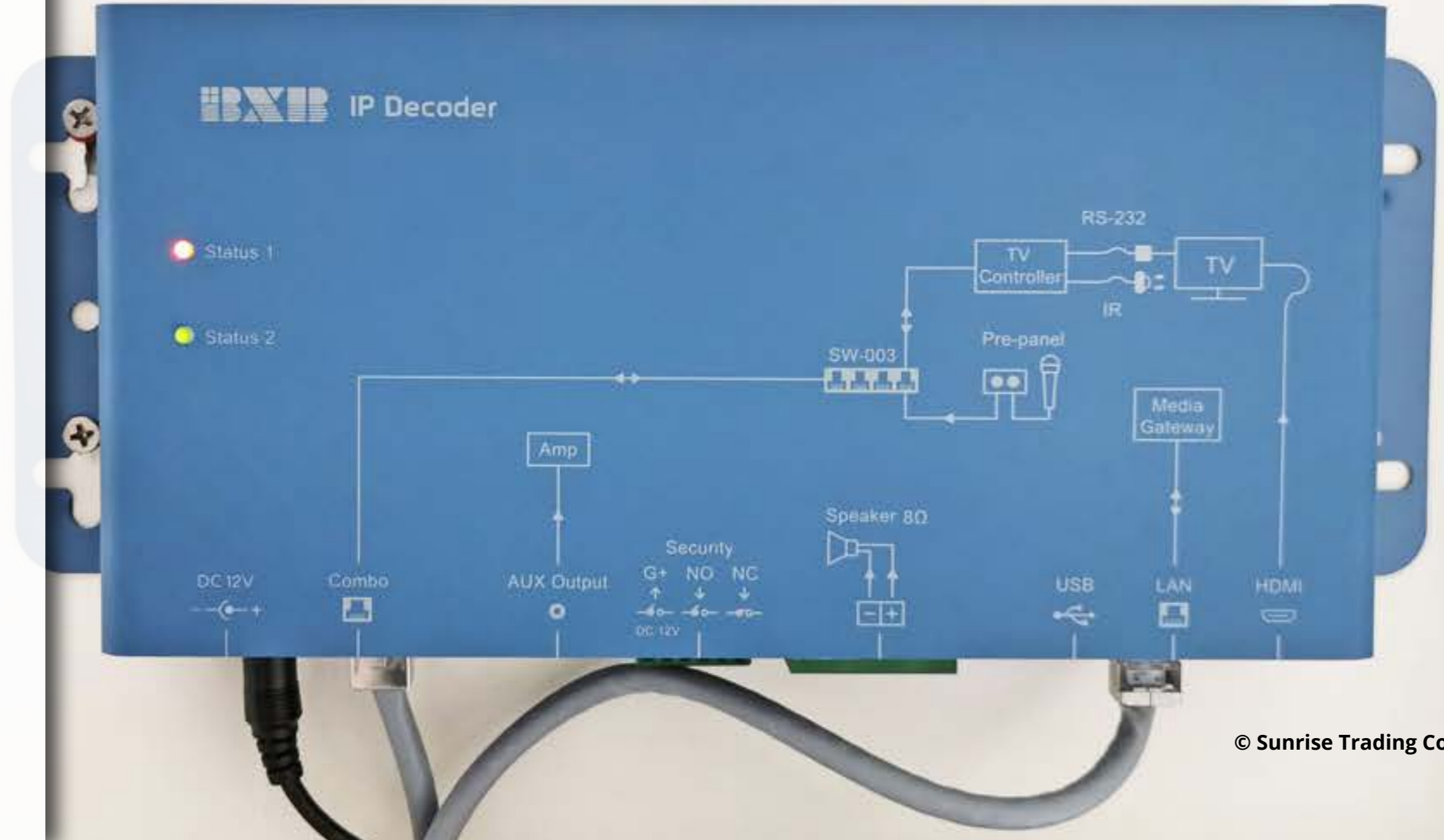
# ICP-5111

IP Decoder



- Built-in Class-D amplifier; the energy-conversion efficiency can reach 90%.
- The image, audio, and control signals are transmitted via IP mode. The transmission distance can reach 100M.
- Support various security and emergency call equipments: equipped with programmable N.O and N.C connector for door access, alarming, and two-way intercom devices for teaching.

**1/F ~ 4/F**



# + SERVER ROOM

- Central Control Unit 1 pc
- Multi-channel Audio Processor 1 pc
- Single-channel Multimedia Distributor 3 pc
- Programmed Media Gateway 1 pc



# ICP-5100

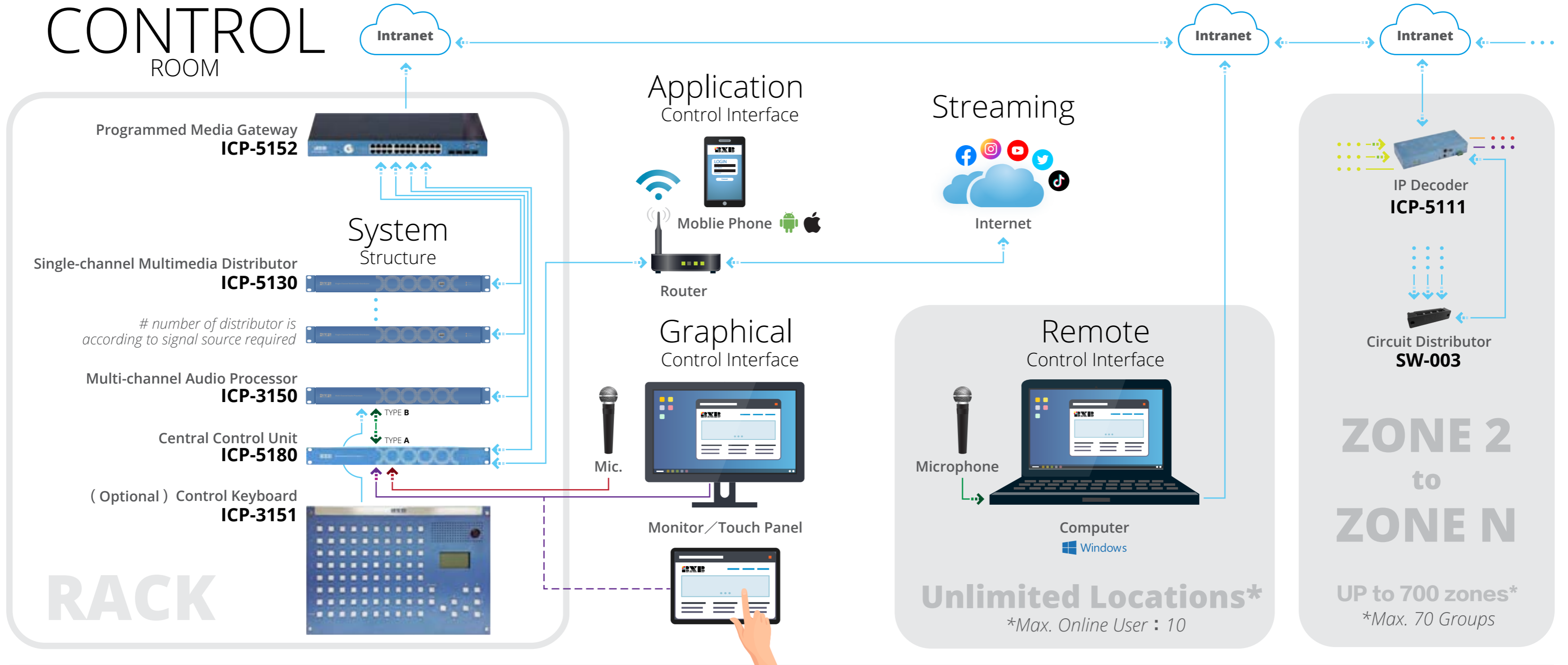
## IP PA SYSTEM

With the integration of AV streaming and IoT management technique, the school can execute scheduling and control the power smartly and automatically. For instance, the system can turn on the LCD monitor and play back the multimedia materials without manual operation; it can also auto-adjust the temperature and ventilate the classroom based on the sensor. Via the integration with the government's open data, the information of disaster warning, air quality, weather condition, and bus arrival can be easily displayed.





# CONTROL ROOM



**CABLES**    → CAT.6    → USB    → Audio

**ICP-5100 SYSTEM STRUTURE**

Remote Control Interface

Unlimited Locations\*

\*Max. Online User : 10

IP Decoder ICP-5111

Circuit Distributor SW-003

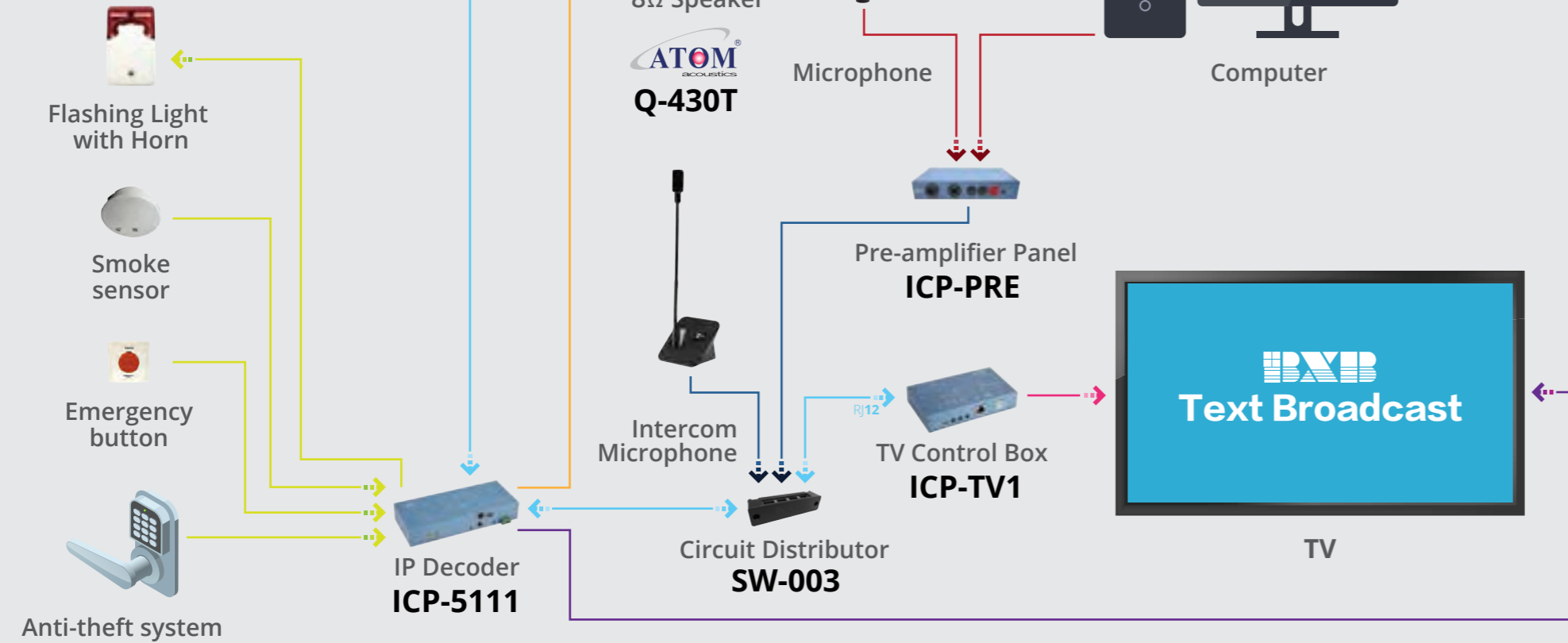
**ZONE 2 to ZONE N**

UP to 700 zones\*

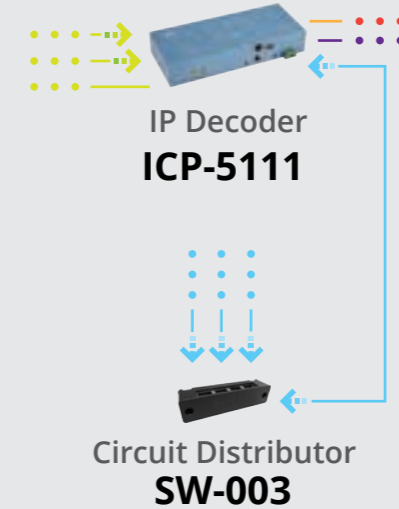
\*Max. 70 Groups

# ZONE

## ZONE 1



## ZONE 2 to ZONE N



**ZONE 2 to ZONE N**  
 UP to 700 zones\*  
 \*Max. 70 Groups

## Video Broadcasting

